

# Lowcountry Turners

A chapter of the American Association of Woodturners



## LCT Newsletter — November-December 2017

### Inside This Issue

<i>President's Corner</i>	1
<i>Demonstrations, Events, Reminders</i>	2
<i>LCT Instant Gallery</i>	3
<i>Woodturning Mentors</i>	4
<i>Club Contact Information</i>	5
<i>Woodturning Links</i>	6

### Points of Interest

- *Upcoming Events*—p. 2
- *Community Service*—p. 2
- *Woodturning Mentors*—p. 4
- *Woodturning Links*—p. 5

### President's Corner

Hello everyone,

Our next meeting will be Thursday, December 7th, 6:00 p.m. at Case Woodworking Supply, 1725 Grove Point Road, Savannah. We will have pizza during the midpoint of the meeting. Our demonstrator will be Don Rawlins from Brooklet, GA. We can thank Don for bringing us Nick Agar whose demonstration last April had the largest audience in LCT's history – more than 65 attendees. Don Rawlins' demo should be a very good one. We don't know what Mother Nature will bring us weather wise so please keep in mind Case Woodworking Supply is not heated. And, don't forget to bring a chair.

If you missed the last LCT meeting in October, you missed a good one. Roy Yarger turned a miniature bird house ornament during the first half then Lonnie turned his signature spin-tops during the second half. Roy is an amazing demonstrator and always comes prepared. There were 5 steps to turning the bird-house. Roy brought in actual examples of the work-in-process at each step, then showed us how to complete each step.

I think we had more of our members taking notes during Lonnie's spin-top demonstration than we have had for any other demonstrator. In addition to the texturing tools and special markers, members were taking notes when

Lonnie was sharing his secrets on how to lower the center-of-gravity to get longer spins.

Many thanks to Roy Yarger, Ronnie Burgstiner, Doug McCulloch, Gary Fleenor, Lonnie Bott and everyone else who made pens for the Freedom Pens Project. 36 pens were made by LCT members that will be sent to American servicewomen and men overseas.

We thank everyone for their suggestions and responses on the survey that was handed out the past two meetings. During the brief business portion of the December 7th meeting Doug McCulloch will discuss the surveys. We welcome any and all suggestions.

We want to thank Chace Holloway for providing Case Woodworking Supply as a meeting place for us. The meeting / demonstration may start at 6:00 p.m. but come early and do some Christmas shopping for yourself. You have to travel to Jacksonville or Charleston to actually put your hands on a turning tool and you will not find a better selection of domestic and imported hardwood lumber and turning blanks anywhere.

**We extend an invitation to anyone who would like to get involved as an officer / board member of the Lowcountry Turners. Please let us know at the meeting if you are interested.**

Regards... Lonnie

## Demonstrations, Events, Items of Interest

### Upcoming LCT Demonstrators:

All meetings (unless otherwise noted) are the last Thursday of each month at 6:00 pm. See Contact page for location information.

- **January 26th 2017— Mike Thomas**
- **March 2nd 2017— Nick Agar**
- **March 30th 2017— Dan Lee**
- **April 27th 2017— Nick Cook**
- **May 25th 2017— Walt Wager**
- **June 29th 2017—Taking the Summer Off**
- **July 27th 2017—Taking the Summer Off**
- **August 31st 2017—Taking the Summer Off**
- **September 28th 2017—LCT Members collaborate to turn a bowl**
- **October 26th 2017—Holiday Gift Ideas**
- **November 30th 2017—Combined with December**
- **December 14th 2017—Holiday Party**

### Community Service

As Lonnie said, several members of the club again turned pens for the troops overseas. Here is a picture of the 36 pens we produced ready to ship them out. Thanks to Roy for organizing this fun event and thanks to everyone who participated.



### Tips and Hints From Noel Wright

Here's a video of Australian Brandan Stemp turning (and finishing) a bowl in under 10 minutes.

He has many "how to" videos on Youtube that are quite informative. I have learned quite a few new turning "tricks" from watching his videos over the past month.

[Bowl Video](#)  
[Stemp Website](#)

**Master spindle turner**—this is how you use a skew. Although many of us are hesitant to use a skew, this video proves that once you are proficient, it is a very efficient way to turn spindles.

[Skew link](#)

**Reminder—2018 Dues are due soon. You can pay the \$35 fee to Roy, the treasurer, at the December or January meeting.**

A couple of random, but very impressive turnings from an email Noel sent me...  
 If anyone in the LCT can match this, have at it, and be sure to bring them in for show-n-tell!



### LCT October Instant Gallery

Here are pictures of the fine pieces brought in by LCT members for the October meeting. I got the names and information on some of the turnings, but not all. I apologize to the folks who aren't getting the proper credit. DJM.



Four beautiful and as always amazing segmented pieces—Frank Anson



Snakewood shallow bowl, carved and turned—Howard Whitford



Large Cuban Mahogany bowl—Barb Hahn

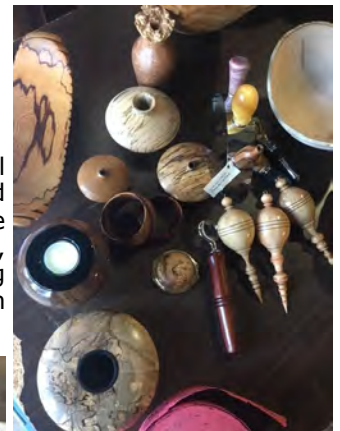


Small Rosewood bowl—Barb Hahn



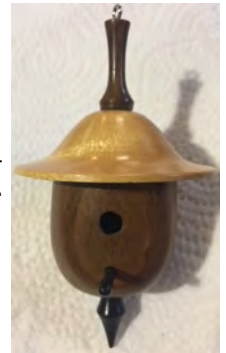
Ambrosia Maple beaded platter—Barb Hahn

A variety of small "holiday" turnings—bud vases, ornaments, wine stoppers, tea candles, make up mirror—Doug McCulloch



Large turned and carved Japanese Cedar vase, finished with Minwax Antique Oil—Doug McCulloch

One of Roy Yarger's finished miniature bird houses.



One of Lonnie Bott's finished spin tops, with texturing and pen coloring.



## *DVD/Video Tape Library*

Does anyone in the club have any woodturning DVD's they would like to donate or loan to the club to share with other members?

Do you have a suggestion for a DVD you would like

*Take advantage of this valuable and money saving resource.*

to see the club make available to members? If so, talk to a board member.

## *Woodturning Schools*

The following schools in the Southeast offer classes in woodturning, as well as other arts and crafts. Check out their websites to see the scheduled course offerings.

John C. Campbell Folk School [www.folkschool.org](http://www.folkschool.org)

Arrowmont School of Arts & Crafts [www.arrowmont.org](http://www.arrowmont.org)

Highland Woodworking [www.highlandwoodworking.com](http://www.highlandwoodworking.com)

Appalachian Center for Crafts [www.tntech.edu/craftcenter](http://www.tntech.edu/craftcenter)

Woodcraft of Atlanta [www.woodcraft.com](http://www.woodcraft.com)

## *LCT Woodturning Mentors*

*Take your skills to the next level. Have more fun.*

The following club members are offering their time and shops to help others in the club on an informal basis with their turning skills or projects. If you have something you would like help with, or just want to spend some time turning with a fellow turner, give them a call or talk to them at a meeting to set something up.

If you would like to be added to this list, contact Doug McCulloch (see Contacts page).

**Roy Yarger**—Savannah

**Lonnie Bott**—Savannah

**Doug McCulloch**—South Savannah / Skidaway

**Frank Anson**—Beaufort SC, specializing in segmented turning

**Noel Wright**—Isle of Hope / Savannah

## Contacts

[www.lowcountryturners.com](http://www.lowcountryturners.com)

**Meeting Location:**  
Case Woodworking Supply  
1725 Grove Point Rd  
Savannah GA 31419



*The Lowcountry Turners (LCT) is a chapter of the American Association of Woodturners (AAW), dedicated to providing education, information and organization to those interested in woodturning. The LCT services those in the metro Savannah area. We meet on the last Thursday of each month at 6:00 P.M. at Case Woodworking Supply. Meetings are open to all. Parking is available outside the building.*

<b>Name, Position</b>	<b>Phone</b>	<b>Email address</b>
Lonnie Bott, President	912-228-0234	bottl@comcast.net
Dan Lee, Vice President	912-704-6736	
Roy Yarger, Treasurer		w.r.yarger@gmail.com
Doug McCulloch, Secretary	678-571-4158	<a href="mailto:mccullochmail@mindspring.com">mccullochmail@mindspring.com</a>
Peter Lamb , Director at Large		
Steve Cook, Program Chairman	912-313-2230	
Bridget Harron, Education		
Jeff Amacher, Equipment		
Tanya Malik, Webmaster		

## Woodturning Links

### **American Association of Woodturners**

[www.woodturner.org](http://www.woodturner.org)  
Woodturning Association

### **Craft Supply**

[www.woodturnerscatalog.com](http://www.woodturnerscatalog.com)  
800-551-8876  
Woodturning Supplies

### **Packard**

[www.packardwoodworks.com](http://www.packardwoodworks.com)  
800-683-8876  
Woodturning Supplies

### **Klingspor**

[www.woodworkingshop.com](http://www.woodworkingshop.com)  
800-228-0000  
Abrasives and woodturning supplies

### **Highland Woodworking**

[www.highlandhardware.com](http://www.highlandhardware.com)  
800-241-6748  
Woodworking tools, supplies

### **Peachtree Woodworking Supply Inc.**

[www.ptreeusa.com](http://www.ptreeusa.com)  
888-512-9069  
Turning and carving tools, supplies

### **Penn State**

[www.pennstateind.com](http://www.pennstateind.com)  
800-377-7297  
Woodturning tools, supplies

### **Hut Products**

[www.hutproducts.com](http://www.hutproducts.com)  
800-547-5461  
Woodturning tools, supplies

### **Atlanta Wood Products**

[www.hardwoodweb.com](http://www.hardwoodweb.com)  
800-964-7804  
Specialty Hardwoods

### **Woodcraft of Atlanta**

[www.woodcraft.com](http://www.woodcraft.com)  
770-587-3372  
Woodworking and Hardware

### **Rockler**

[www.rockler29.com](http://www.rockler29.com)  
800-279-4441  
Woodworking and Hardware

### **Wood magazine Forum**

[www.woodmagazine.com](http://www.woodmagazine.com)  
Q & A on Woodturning

---

## Closing

This newsletter is published monthly by the Low Country Woodturners, (LCT). All opinions expressed by contributors do not necessarily reflect those of the Editor, Officers, or the LCT.

Woodturning Schools and Instructors listed in this Newsletter are not recommended or endorsed by the LCT, but are made available to the LCT members and others as a convenience only.  
Your LCT questions, comments and suggestions are

always welcome. You may contact any officer through the contact information in this newsletter, or our website's contact webpage: [info@lowcountryturners.com](mailto:info@lowcountryturners.com)